

# TREELINE,

TENNESSEE FORESTRY ASSOCIATION

December 2008



## Thoughts for the 2008-2009 year....

By: Terry Porter, TFA President

As the year 2008 comes quickly to a close I thought it might be appropriate to write about some thoughts and observations I have had since becoming our president in October.



Terry Porter, TFA New President after receiving the gavel from David Hand of Smurfit-Stone at TFA 2008 Annual Meeting.

First and foremost let me say I am very proud and extremely humbled to serve as president of such a wonderful, hard working and respected association such as Tennessee Forestry Association. Over the years as I have traveled from one end of the beautiful state to the other I never ceased to be amazed at the beauty of and wealth of Tennessee's natural resources. As I have had the privilege to get to know more of the people, that on a daily basis are fortunate enough to work and manage these resources, I am even more amazed at the hard work, commitment and overall love of those resources and the respec-

tive jobs performed to accomplish such an important task. It is truly rewarding and inspirational.

We have just completed a very busy schedule of retreats, committee meetings, regional meetings and board meetings just last week. It seems as though as this year began most of the talk centered around discussions of when was the last time you saw it this bad and answers being the worst I have ever seen to more recent responses being answered to this as the worst conditions ever experienced in this industry. During many of the conversations and meetings things certainly seem bleak to say the least as we move into 2009. However true to the character and perseverance of the truly inspirational members of this association I still see and detect the passion and love each of you have for the opportunity to work in this field in such a resource rich state as Tennessee certainly is.

As we look back on 2008 TFA had many successes and certainly many reasons to be thankful and optimistic as we look forward to 2009. Without question the association has positioned itself extremely well in the Tennessee Legislature with victories such as the defeating a very prohibitive timber trespass bill as well as the huge success and support garnered for the Green Globes legislation, being the only state that was successful in this venture and acquiring national attention by groups such as AFPA. We approach the new session with cautious optimism but confidence in our position and effectiveness. I want to acknowledge the wonderful job the staff and meeting planning committee accomplished in order for our membership to enjoy one of the best meetings in recent memory, filled with plenty of activities in the Nashville area as well as a very timely and educational program schedule that everyone seemed to enjoy.

As we look forward to 2009 there are many exciting opportunities ahead that should be very beneficial to the members of the association. If you have not visited the website lately then I would encourage everyone to do so as the staff has undertaken some very posi-

tive revisions to continue to make it one of the best websites out there.

I definably want to acknowledge and express all of our sincere appreciation for all the wonderful partnerships we as an association are so blessed with in the state. Certainly the association could not function to the high level it does without the commitment, participation and hard work from partners such as the Tennessee Department of Agriculture, Tennessee Division of Forestry, TWRA the University of Tennessee, US Forest Service as well as organizations like Farm Bureau.

I would like to particularly recognize the tireless and most effective work of the staff at Tennessee Forestry Association. I am truly amazed and sometimes totally overwhelmed by the amount and quality of work the staff accomplishes on a daily basis as well as the eagerness in addressing any and all questions, projects and issues brought to them daily by the members, the public and others. They truly work extremely hard to make the association the great association that it is and to serve the needs of their members as well as promote good forestry and resource management. I am also humbled and amazed by the working committees made up of volunteers from all areas of the state that work so very hard and use their time, resources and professional expertise daily to further the missions of this association and to continually look for additional ways to serve the membership as well as advance the message of the resources in Tennessee.

Please continue to provide us with feedback and ideas as it is most important to always remember that this is your association and everyone is here to serve the membership. The staff, the committees and certainly I am always eager to hear from our membership on how are we doing and to provide us with any ideas, concerns or issues you would like to discuss. In these very tight times the most important mission the association can undertake is that of being responsive to the needs of its membership and everyone at TFA is most definitely committed to that mission.

I guess the message I would like to carry into 2009 is yes it is going to be a very challenging and difficult year for all of us associated with this industry and profession. Without question many of our members and colleagues will undergo many changes as will the industry as a whole. We should always remember we are all in this together and Tennesseans are known for their ability to face challenging and difficult times as is this industry and membership. We have faced many tough times before and one way or another we have managed to evolve into what we are today and in many ways that could be categorized as "Family". When I think of the diverse membership and the wonderful people that make up the TFA I always think of a family and by staying united, continuing to work together and reaching out and being there for each other we will weather this storm and ultimately be stronger than ever as we look forward into new opportunities and challenges the new face of this industry will most certainly have.

May everyone have a most glorious and blessed holiday season.

We Like to extend our gratitude for the generous support of our sponsors, exhibitors, and advertisers.

**A SPECIAL THANKS TO OUR ANNUAL MEETING SPONSORS**

**President's Reception**

AbitibiBowater  
 Forest Marketing Group  
 Quercus Forest Products  
 Sam Carey Lumber Co.  
 Smurfit-Stone  
 TFAWCG

**General Sessions**

BASF  
 Blue Ridge Paper  
 Domtar, Inc.  
 Packaging Corp. of America  
 The Sawmill

**Thursday Morning Break**

Charles R. Page & Associates  
 J.V. Averitt Sawmill

Martin Lumber Company

**Golf Tournament**

G.R. Wood, Inc.  
 Graham Holdings  
 Summers Lumber Co.  
 TFAWSCG  
 TIKA Energies  
 Van Meter Insurance

**Silent Auction/Reception**

Clark Lumber Co.  
 Cooper Marine Timberland Corp.  
 Forest Management  
 Graham Holdings  
 TNTree Farm Committee  
 Temple-Inland  
 Timber Express, USA

**TFA's Award's Dinner**

AbitibiBowater  
 Georgia Pacific  
 Hankins Forest Products  
 Jack Daniel Distillery  
 NewPage Corporation  
 Thompson Machinery

**Friday Morning Breakfast**

Hassell & Hughes Lumber Co.  
 LandMark Systems  
 Louisiana-Pacific  
 Middleton Lumber Co.  
 Pendergrass Supply & Rental  
 Walter M. Fields Lumber Co.

**A BIG THANK YOU TO THE ANNUAL MEETING EXHIBITORS**

Aragate Climate Credit Corporation  
 ArborGen  
 American Forest Management, Inc.  
 BB&T / Legge Insurance  
 Bryan Equipment Sales/Sthl  
 Columbia Gas Transmission/Columbia Gulf Transmission  
 ENERNOC, Inc.  
 Forest Landowner's Association  
 LandMark Systems  
 Log-A-Load for Kids  
 Power Equipment Company

Scott Construction Company  
 Superior Forest Service, Inc.  
 Taylor Machine Works  
 Tennessee Department of Agriculture  
 Tennessee Division of Forestry  
 Tennessee Timber Consultants  
 Thompson Machinery  
 TS Manufacturing Company  
 UT Forest Products  
 Office of Bio Energy Programs  
 Van Meter Insurance Company

**TFA ANNOUNCES 2008 AWARD RECIPIENTS**

The following TFA members were recognized for their outstanding contributions to supporting good forestry management and providing leadership statewide.

**Legislator of the Year**

Senator Lowe Finney  
 Jackson, TN

**TFA Award of Merit**

Bill Burris  
 Domtar, Inc.

**Forest Resource Award**

\*Bob Baker  
 Tennessee Division of Forestry

**Honorary Members**

Joe Savery  
 \*Bill Bartle

**CFA of the Year**

Decatur County CFA

**Tree Farmer of the Year**

Kenneth Tidwell  
 Joelton, TN

**Extension Agent of the Year**

\*Sheldon Barker  
 Sequatchie County

**Project Learning Tree Awards**

**Facilitator of the Year**

Leslie Suters  
 TN Tech University  
 Knoxville, TN

**Educator of the Year**

Hilary Hargrove  
 Riverdale High School  
 Murfreesboro, TN

**Master Logger of the Year**

Jolley Family Logging  
 Shelbyville, TN

**Other Recognitions**

Comm. Givens  
 Master Logger Support

Rick Bryant  
 Master Logger Support

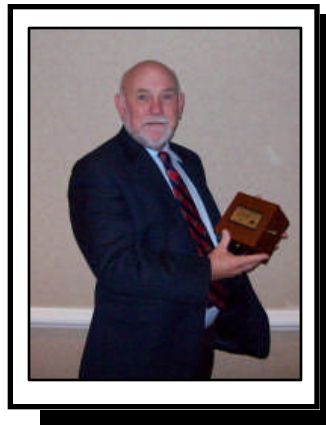
The photos of the 2008 Annual Meeting award winners are located on page 3.

\*Photos are not available.



**BILL BURRIS**

Domtar, Inc.  
Kingsport, TN  
2008 TFA Award of Merit



**COMMISSIONER KEN GIVENS**

TN Department of Agriculture  
receives Recognition for his continued support of the Master Logger Program



Left to Right: Padgett Kelly, MTSU presented Leslie Sutera w Facilitator of the Yr. Award. Hilary Hargrove was presented the Educator of the Yr. Award by Dave Walters, TN Division of Forestry.



**JOE SAVERY**

Retired TFA President  
Honorary Member Award



**KENNETH TIDWELL**

Joelton, Tennessee  
2008 Tree Farmer of the Yr.



**SENATOR LOWE FINNEY**

David Hand, TFA President (on left) presented Legislator of the Year award to Sen. Lowe Finney accompanied by his Wife; Tammy Finney.



**DECATUR CO. FORESTRY ASSN.**

was honored with CFA of the Year. Representing their association was Steve Glass of UT Ext. Service (left) Randall Roach (middle) & J.B. Roach of Roach Logging (right)



**LESLIE SUTERS**

Tennessee Tech University  
Knoxville, Tennessee  
2008 PLT Facilitator of the Year



**HILARY HARGROVE**

Rivendale High School  
Murfreesboro, Tennessee  
2008 PLT Educator of the Year



Rick Bryant of STIHL, (Sponsor & Supporter of Master Logger Program) presented Stanley Jolley with a Chainsaw and Plaque for the Jolley Family winning the 2008 Logger of the year.

TFA ANNUAL MEETING AWARD PHOTOS CONTINUED. . .



**2008 Tree Farmer & CFA of the Yr.**  
Starting on left: Kenneth Tidwell, Tree Farmer of the Yr. , Steve Glass, Randall Roach, and J.B. Roach, representatives for Decatur Co. Forestry Assn. for CFA of the Yr. Award



**2008 Honorary Member & Award of Merit**  
starting on left; Joe Savery, Honorary Member, Lieutenant Gov. Ron Ramsey with the TN Senate, Bill Burris, Domtar, Award of Merit. & Dwight King, Volunteer Logging. presented the award to Joe Savery.

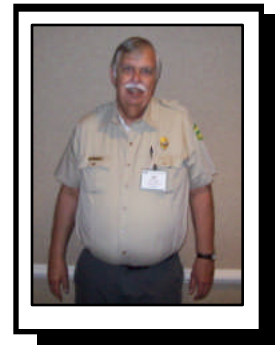
2008 ANNUAL MEETING @ MUSIC CITY SHERATON IN NASHVILLE, TN



**DAVID HAND**  
TFA 2007 - 2008 President  
Announces Start of General Sessions.



**DR. HANK STELZER,**  
University of Missouri one of many great speakers at the meeting.



**BILL SMITH**  
of TN Division of Forestry after he presented the Co. Forestry Assn. Award to Decatur Co. Forestry Assn.



**SEAN MCHANON, WADE MCHANON, & JOE LLOYD**  
w/ TN Timber Consultants after finishing their afternoon sessions presentation on Carbon Sequestration.



**TERRY PORTER**  
LandMark Systems  
Castalian Springs, TN  
TFA New President for 2008-2009



**JOE SAVERY**  
TFA Past President  
and Guest at the Music City Sheraton Hotel for TFA 2008 Annual Meeting.

**PRESIDENT:** Terry Porter, LandMark Systems-Gallatin, Tennessee  
**1ST VICE-PRESIDENT:** Johnny Heard, Hassell & Hughes Lumber-Collinwood, Tennessee  
**EAST TN VICE-PRESIDENT:** Kevin Hoyt, Huber Engineered Woods-Spring City, Tennessee  
**MIDDLE TN VICE-PRESIDENT:** Larry Pitts, G.R. Wood-Cunningham, Tennessee  
**WEST TN VICE-PRESIDENT:** Patricia Elliott, Mayfield Creek Consulting-Wickliffe, Kentucky  
**TREASURER:** Mike Witt, Cookeville, Tennessee

**DIRECTORS: TERM EXPIRING 2011**

Mike Barnes, The Sawmill-Hohenwald  
 Jake Almond, American Forest Management-Oak Ridge  
 Steve Bond, Forest Management-Savannah  
 Charles Daugherty, Chatin Hollow Tree Farm-Crossville  
 Brenda Hiendl, International Paper-Memphis  
 Tommy Graham, Graham Holdings Company-Linden  
 Steve Owen, AbitibiBowater-Calhoun  
 Joe Hykra, Sam Carey Lumber Company-Germantown  
 George McClary, Thompson Machinery-Camden

**DIRECTORS: TERM EXPIRING 2010**

Bill Burris, Domtar-Kingsport  
 Kim Rohr, NewPage Corporation-Dover  
 Tony Gant, American Forest Management-Waynesboro  
 Bill Joyce, Middle Tennessee Lumber Co.-Dickson  
 Richard Jones, PCA-Council  
 Don Page, Charles R. Page & Associates-Chattanooga  
 Robert Williams, Quercus Forest Products-Centerville  
 Richard Winslow, University of the South-Sewanee  
 Jay Wolfe, Hankins Forest Products-Savannah

**DIRECTORS: TERM EXPIRING 2009**

John Ross, Ross Partnership-Savannah  
 Tony Campbell, Individual-Kingston Springs  
 Bob Cunningham, White County Lumber-Sparta  
 Adam Taylor, University of Tennessee Forest Products Center-Knoxville  
 Rob Harrison, Plateau Properties-Crossville  
 Matt Coate, Whitson Lumber Company-Clarksville  
 Joe Pulley, Pulley Logging-Erin  
 Tom Skaggs, Individual-Knoxville  
 Tom Frost, Temple-Inland- New Johnsonville

**EX-OFFICIOS**

David Hand, Immediate Past President  
 Smurfit-Stone Chattanooga

Ken Givens, Commissioner  
 TN Dept. of Agriculture

Jim Fyke, Commissioner  
 TN Dept. of Environment & Conservation

Gary Myers, Executive Director  
 TN Wildlife Resources Agency

Steve Scott, State Forester  
 TN Dept. of Agriculture, Division of Forestry

Tom Speaks, Forest Supervisor  
 Cherokee National Forest

Rhedona Rose, Representative  
 Tennessee Farm Bureau

Keith Belli  
 University of Tennessee

**County Forestry Representatives:  
 Term Expires: 2009**

**West TN CFA Representative**

Bo Higginbottom  
 Hardin County CFA

**Middle TN CFA Representative**

Charles Robertson,  
 Southern Middle TN CFA

**East TN CFA Representative**

Mike Cardin,  
 Marion County CFA

## CLEAR-CUT WITHIN THE WATERSHED OF A HIGH QUALITY STREAM OF THE WESTERN HIGHLAND RIM: ANALYSIS OF FIVE YEARS OF MACROINVERTEBRATE DATA

By: Joseph C. Augustin , Biologist , Timothy C. Wilder ,Environmental Field Office Manager, Tennessee Department of Environment and Conservation, Division of Water Pollution Control

In 2002, Weyerhaeuser purchased Willamette Industries, Inc. In Tennessee, the land holdings of Willamette included approximately 174,000 acres in Wayne, Lewis, Hickman, Perry and Humphries Counties. The following year, Weyerhaeuser sold these lands. The lands formerly owned by Willamette passed to several interests, corporate and private, and the timber management practices on those lands changed. Some large clearcuts were initiated. One of these was on a tract of approximately 5000 acres in southern Lewis County south of the Buffalo River. All but the lowest portion of the watershed of one stream, Cow Hollow Branch, lies within this tract of land.

Cow Hollow Branch is a perennial tributary of the Buffalo River in South-central Lewis County located within the Western Highland Rim Ecoregion (Griffith *et. al.* 1997). The watershed of Cow Hollow Branch encompasses 710 acres, approximately 600 acres of which are within the 5000-acre tract formerly owned by Willamette

In early 2004, clear-cutting began on the 5000-acre tract. The logger employed Forestry best management practices (BMPs) (TDA 2003) at the site including careful location of decking and loading areas, haul roads, and skid trails, the avoidance of stream crossings and construction of water bars on skid trails. He developed a cutting plan prior to beginning that included streamside management zones (SMZs) where timber was not harvested. The SMZs were marked in the field with survey flagging.

### Methods

A reach of Cow Hollow Branch was selected immediately downstream of the tract to be clear-cut approximate location of the reach selected for macroinvertebrate sampling). The site was visited in the spring in five consecutive years beginning in April 2004. The benthic macroinvertebrate community was sampled in each of the five years. Five Surber replicates were collected each year for hypothesis testing. Metrics were calculated from the Surber replicates.

One-Way Analysis of Variance (ANOVA) was used to test the *null* hypothesis of no difference among each year's macroinvertebrate community metrics calculated from the Surber samples. Significance was accepted at an alpha of 0.05. Semi-Quantitative, Single-Habitat sampling, or SQSH (TDEC 2006) was also used to sample the macroinvertebrate community. The metrics were calculated from the SQSH samples by the Aquatic Biology section of the Tennessee Department of Health laboratory in Nashville. The aerial extent of the clear-cut was calculated using GIS software, *ArcMap 9.2*. The stream channel substrate was documented in each of the five years with photographs.

### Results

The watershed of Cow Hollow Branch remained 100% forested until at least 1997, as can be seen in an aerial photo taken from early 1997 to

1999. Clear-cutting within the Cow Hollow Branch watershed is believed to have begun during the early part of 2004. The clear-cut progressed over four years through 2007, with approximately 125 acres cut in each of these years. At the conclusion of our data collection, we calculated that 509 acres of the 710-acre watershed had been clear-cut.

Taxonomy of Surber sample replicates for all five years follows Merritt and Cummins (1996). All Surber samples were processed in the spring of 2008. A list of observed taxa is given in \*Appendix A. The macroinvertebrate metrics were calculated and are presented in \*Appendix B. Abundance data, in a taxa-by-replicate matrix, is given in \*Appendix B. Results of the ANOVA analysis of each of these metrics are in \*Table 2. No difference was detected in any of the macroinvertebrate community metrics, though there was difference detected among the years in the actual numbers of organisms collected.

Metrics calculated from each year's SQSH samples from the selected reach of Cow Hollow Branch below the clear-cut are given in Table 3. The Tennessee Macroinvertebrate \*Index (TMI) combines seven metrics of biological quality of the macroinvertebrate community given in \*Table 1 (excluding total number of organisms per sample) (TDEC 2006). A TMI score of 40 or 42 defines a condition of "exceptional biological diversity" in a stream of the Western Highland Rim. Streams with exceptional biological diversity are defined as Exceptional Tennessee Waters by rule (TWQCB 2008).

Photographs were taken each year to document the condition of the substrate within Cow Hollow Branch. A selection of \*photos, taken on April 30, 2008 down-gradient of the clear-cut, Additional \*photos taken in 2004, 2005, 2006 and 2007 are in \*Appendix C.

### Discussion and Conclusions

We believe the absence of observed sediment pollution impacts in Cow Hollow Branch during the progression of the clear-cutting of its watershed are attributable to the application of simple Forestry best management practices at the site. Haul roads and decking areas were located on the tops of the ridges. Stream-crossings were avoided. The leaf-litter at the site was left intact thereby providing protection against mobilization of the underlying mineral soils by rainfall. Water bars were placed in disturbed areas on slopes, particularly across skid trails. Streamside management zones, where all logging activity was excluded, were planned and marked in the field prior to cutting, and remain intact. Finally, clear-cut areas were allowed to revegetate as the logger moved into new areas.

Between early 2004 and late 2007, approximately 509 acres, or 70%, of the Cow Hollow Branch watershed was clear-cut. Despite this, the substrate of Cow Hollow Branch has remained free of any new mineral sediment deposits. The macroinvertebrate community remains at a level of "exceptional biological diversity" and Cow Hollow Branch retains its status as Tennessee Exceptional Waters (TWQCB 2008). Degradation of the stream was not detected.

\*Please visit TFA website at [www.tnforestry.com/Attachments/Reports/CLEAR-CUT of Cow Hollow Branch, final report.pdf](http://www.tnforestry.com/Attachments/Reports/CLEAR-CUT of Cow Hollow Branch, final report.pdf) for the detail report with photos, drawings, tables & the Appendix

## Project Learning Tree in Tennessee

By: Tamara Coleman, Tennessee PLT Coordinator

This year we have expanded our contact with pre-service educators to include a group at East Tennessee State University. Jan Coley has added Project Learning Tree to the syllabus of her class in their 2+2 program. Thank you, Jan! University of Tennessee Forestry and Wildlife Resources students received PLT training and then put it to use just a few days later as they lead classes of students at a local elementary school. Carrie Hembree and Tami Coleman led that workshop. We continue to reach pre-service educators at Middle Tennessee State University in the classes taught by PLT Facilitators Padgett Kelly, Cindi Smith-Walters and Kim Saddler. Tamera Klingbyll at Lipscomb University and Jill Norvell at Memphis State included PLT in their courses this year as well. Tennessee Tech continues to include PLT training in their


pre-service education classes with the help of facilitators George Bartnik, Deb Watlington, Leslie Suters and Jane Baker.

PLT workshops open to the public or scheduled for faculty groups took place at Paris Landing State Park, Warner Park Nature Center in Nashville, Agricenter International in Memphis, Blooming Idiots Farm in Bloomington Springs, Standing Stone State Park, Norris Elementary School, Jefferson County High School and Dayton City Elementary School. We have Michelle Rogers, Kathy DeWein, Cindy Black, Kim Bailey, Tim Roberts, Leslie Suters, Deb Watlington, Jan Coley, Julia Gregory, and Susie Grant to thank for all of that good work! At last count, we have over 630 new PLT Educators in Tennessee this year.

# Tennessee Forestry Association's Supporters




 5973 Pinewood Road  
 Franklin, TN 37064  
*Buyers of Standing Timber,  
 Grade Logs, & Veneer*  
**Cell: 931-206-4120**  
**Office: 615-799-8170**  
**Fax: 615-799-8901**  
 Email: jvbiv@charter.net  
*Jordan Beasley  
 Procurement Manager*

Risk Management, Insurance,  
 Bonds & Employee Benefits  
 Don Ray, CIC  
  
 An affiliate of First Horizon National Corporation  
 830 Crescent Centre Drive, Suite 260  
 Franklin, TN 37067  
 (615) 261-1900 • Fax: (615) 261-1901  
 Mobile: (615) 347-9717  
 dray@vanmeterins.com

  
 Neace Lukens. Rooted in service.



Neace Lukens has a commitment to high-quality insurance solutions and a passion for customer service. Neace Lukens has pioneered many Grade A programs for the lumber and forestry industry in areas like property and casualty, risk management and employee benefits.

Neace Lukens combines superior vision for current needs with keen foresight to the future to bring you the quality you demand and the solutions you deserve.

To experience Neace Lukens service, call 615.301.2500.

  
**HANKINS FOREST PRODUCTS, INC.**  
 Buyers of Delivered Pine Logs, Pine Pulpwood and  
 Hardwood Pulpwood  
 475 Loftis Rd  
 Nashville, TN 38332  
 Office: 901-688-5555  
 Fax: 901-688-5558  
 4225 Hwy. 218 By-Pass  
 Paris, TN 38242  
 Office: 901-642-1555  
 Fax: 901-642-8355

**F&W FORESTRY SERVICES, INC.**  
*Providing management, consulting,  
 and real estate services to landowners*

<b>Clinton Office</b> Rick Sluss, C.F. Manager P.O. Box 328 Clinton, TN 37717 (865) 640-5430 rsluss@fwforestry.com		<b>Paris Office</b> Tom Cunningham, C.F. Manager P.O. Box 879 Paris, TN 38242 (731) 234-6685 tcunningham@fwforestry.com
--------------------------------------------------------------------------------------------------------------------------------------	---------------------------------------------------------------------------------------	-------------------------------------------------------------------------------------------------------------------------------------------

**BB&T Legge Insurance**  

 Comprehensive coverage for the forest products industry.  
 Call Bob Atchley or Steve Leddy  
 Cookeville, Tennessee 800/844-1551

# Tennessee Forestry Association

"The Voice of Forestry"

P.O. Box 290693  
Nashville, Tennessee 37229

Phone: 615-883-3832 Fax: 615-883-0515  
E-mail: TreeLine@tnforestry.com

VISIT US ON THE WEB!  
WWW.TNFORESTRY.COM

## 2008 TENNESSEE MASTER LOGGER REPORT

### 2008 MASTER LOGGER REPORT

\*2008 Continuing Education Classes:

2/27/08 Livingston / Log Grading	Adam Taylor	15
2/28/08 Hohenwald / Stream Crossings	Mike Sherrill	25
03/18/08 Fayetteville Visual Impacts	Wayne Clatterback	11
04/23/08 Wartburg / Stream Crossings	Bob Baker	19
04/25/08 Parsons / Log Bucking/Grading	Adam Taylor	30
04/26/08 Parsons / Log Bucking/Grading	Adam Taylor	40
04/30/08 Dunlap / Stream Crossings	Bob Baker	23
05/01/08 Pikeville / Stream Crossings	Bob Baker	12
05/06/08 Dover / Stream Crossings	Mike Sherrill	22
05/07/08 Dover / Stream Crossings	Mike Sherrill	27
07/22/08 Collinwood / Stream Crossings	Mike Sherrill	21
07/23/08 Collinwood / Stream Crossings	Mike Sherrill	10
07/30/08 Dover / Stream Crossings	Mike Sherrill	18
08/27/08 Sparta / Stream Crossings	Bob Baker	12
09/24/08 Red Boiling Springs / Stream Crossings	Bob Baker	16
09/25/08 S. Pittsburg / Stream Crossings	Bob Baker	21
10/09/08 Tazewell / Stream Crossings	Bob Baker	14

10/14/08 Spring City / Visual Impacts	Wayne Clatterback	07
10/15/08 Crossville / Stream Crossings	Bob Baker	09
11/08/08 Collinwood / Stream Crossings	Mike Sherrill	08
12/03/08 Counce / Stream Crossings	Mike Sherrill	19
12/11/08 S. Pittsburg / Stream Crossings	Bob Baker	12

**Total: 391**

### \*2008 5-Day Initial Master Logger Course:

Classes Include: Safety, Best Management Practices, CPR, Silviculture, & Graduation Day

APRIL 10	Camden, TN	23	JULY 10	Crossville, TN	16
JUNE 12	Hohenwald, TN	16	DEC 02	Counce, TN	08

Total: 63

**TOTALS: CEU CLASSES = 22 TOTAL ATTENDEES = 454  
5-DAY COURSES = 4**

\*We will be scheduling more classes for 2009, please contact L.M. Sceals @ 931-209-1397 or Dana at 615-883-3832, If you have



Practicing sustainable forestry and providing markets for Tennessee forest products.

P.O. Box 33  
Counce, TN 38326  
731-689-1249

**kut kwick**  
Heavy Duty Commercial Mowers



Jon Hardwick  
Territory Manager

Phone (912) 265-1630  
Toll Free (800) 248-5945  
Fax (912) 265-6774

PO Box 984, Brunswick, GA 31521

Website: www.kutkwick.com

E-Mail: mowers@kutkwick.com

## LEDKINS INSURANCE AGENCY LLC

INSURANCE FOR THE FOREST PRODUCTS INDUSTRY

LOGGING EQUIPMENT & CONSTRUCTION EQUIPMENT INSURANCE  
WORKMAN'S COMPENSATION & GENERAL LIABILITY ON PAYROLL OR PRODUCTION  
MONTHLY REPORTING & PAYMENT PLANS AVAILABLE  
TRUCK INSURANCE UMBRELLA POLICES

"WE MAKE OUR LIVING BY WRITING COMPETITIVELY PRICED POLICIES.  
IF YOU MAKE A LIVING BY LOGGING, YOU NEED TO CALL US"

MIKE LEDKINS • STAGE LEDKINS • JASON COLLINSWORTH • CHAD HOUZE  
PH-334-636-9936 FAX-334-636-9830  
TOLL FREE - 1-800-766-8349

TFA WISHES EVERYONE A WONDERFUL HOLIDAY